

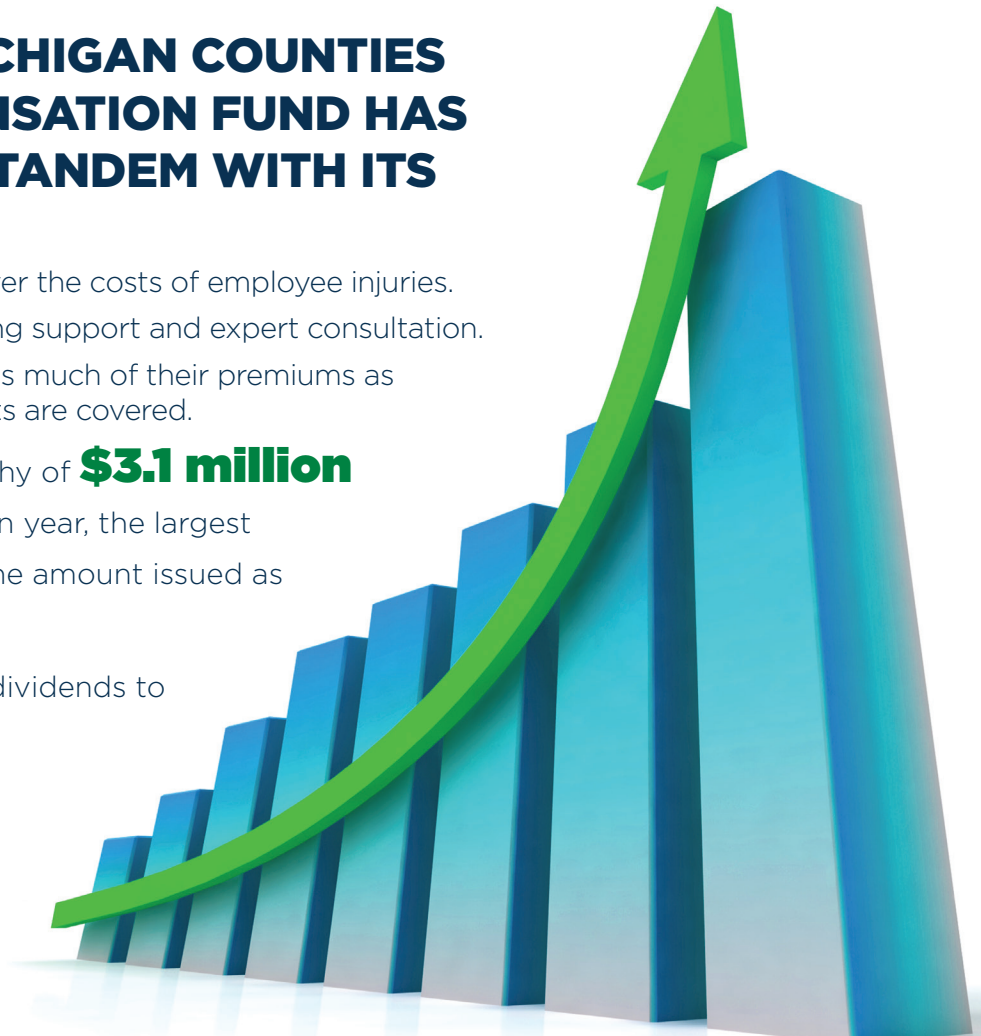
DECADES OF SERVICE MILLIONS IN DIVIDENDS

SINCE 1979, THE MICHIGAN COUNTIES WORKERS' COMPENSATION FUND HAS BEEN WORKING IN TANDEM WITH ITS MEMBERS TO:

1. Ensure proper premiums to cover the costs of employee injuries.
2. Minimize such injuries via training support and expert consultation.
3. Return to members each year as much of their premiums as possible via surpluses after costs are covered.

In late 2016, the fund issued just shy of **\$3.1 million** in such dividends for the 2015 plan year, the largest return in its history — and triple the amount issued as recently as 2000.

This sum pushes the fund's total dividends to nearly **\$60 million.**



**CONTACT US TODAY TO LEARN HOW WE CAN HELP YOU
PROTECT YOUR WORKERS AND YOUR INSURANCE DOLLARS:**

Timothy K. McGuire
MCWCF Administrator
m McGuire@micounties.org



800-258-1152
WWW.MICOUNTIES.ORG



Stephan W. Currie
Executive Director
scurrie@micounties.org

2015 PLAN YEAR DIVIDEND

\$3,100,000

COUNTY/ ENTITY	2015 DIVIDEND
Alger County	\$11,603
Antrim County	\$85,082
Arenac County	\$17,398
Barry County	\$3,819
Battle Creek Housing Commission	\$208
Bayanet	\$211
Benzie County	\$50,335
Benzie Transportation Authority	\$7,276
Blue Water Area Transportation	\$5,128
Branch County	\$82,393
Branch County District Library	\$1,422
Branch County Medical Care Facility (Maple Lawn)	\$132,536
Central Upper Peninsula Planning & Development	\$170
Charlevoix-Cheboygan-Emmet Office of Emergency Mgt.	\$122
Cheboygan County	\$66,173
Cheboygan County Building Authority	\$1,455
Chippewa County	\$54,540
Clinton County	\$91,777
Crawford County	\$35,205
Crystal Manor	\$5,971
Delta Area Transit	\$440
Delta County	\$57,818
Delta/Menominee District Health Department	\$1,737
Dickinson County	\$33,716
District Health Department #10	\$5,988
Emmet County	\$83,698
Gladwin County	\$47,227
Gogebic County	\$30,989

COUNTY/ ENTITY	2015 DIVIDEND
Gogebic County Community Mental Health Authority	\$30,681
Gogebic County Medical Care Facility	\$128,128
Gogebic County Transit	\$1,182
Griot County	\$66,877
Huron Clinton Metroparks	\$14,594
Interurban Transit Authority	\$292
Ionia County	\$93,192
Iron County Medical Care Facility	\$22,737
Isabella County	\$97,354
Isabella County Medical Care Facility	\$97,362
Isabella County Transportation	\$3,135
Kalkaska County	\$7,048
Keweenaw County	\$15,085
Keweenaw Mountain Lodge	\$568
Lake County/ Lake County Clerk	\$78,739
Lifeways, Inc.	\$1,098
Livingston County	\$379,420
Livingston County Mental Health	\$15,994
Luce County	\$5,474
Luce County Ambulance Service	\$1,814
Mackinac County	\$21,218
Manistee County	\$40,179
Manistee County Medical Care Facility	\$43,409
Martha T. Berry Medical Care Facility (Macomb County)	\$5,548
Mason/Oceana Co. Enhanced 9-1-1	\$1,748
Mecosta County	\$108,670
Menominee County	\$62,281
Monroe Housing Commission	\$147

COUNTY/ ENTITY	2015 DIVIDEND
Montmorency County	\$1,409
Newaygo County	\$81,709
Newaygo County Medical Care Facility	\$113,480
Oceana County	\$65,119
Ontonagon County	\$18,808
Osceola County	\$109,821
Oscoda County	\$4,110
Otsego County	\$45,256
Otsego County Judicial System - 87th District Court	\$5,662
Presque Isle County	\$3,202
Roscommon County	\$41,447
Roscommon County Transportation Authority	\$21,354
Sanilac County	\$59,492
Sanilac County Medical Care Facility	\$86,891
Sanilac County Mental Health Authority	\$45,667
Sanilac County Transportation	\$3,435
Schoolcraft County	\$21,666
Schoolcraft County Medical Care Facility	\$41,792
St. Clair County Community Mental Health Authority	\$3,027
Straits Area Narcotics Enforcement (SANE)	\$91
Tuscola County	\$6,167
University Center at Gaylord	\$409
Village of Edwardsburg	\$393
Village of Marcellus	\$675
Wayland Area EMS	\$1,604
Wexford County	\$57,903
TOTAL PAID	\$3.1 MILLION