

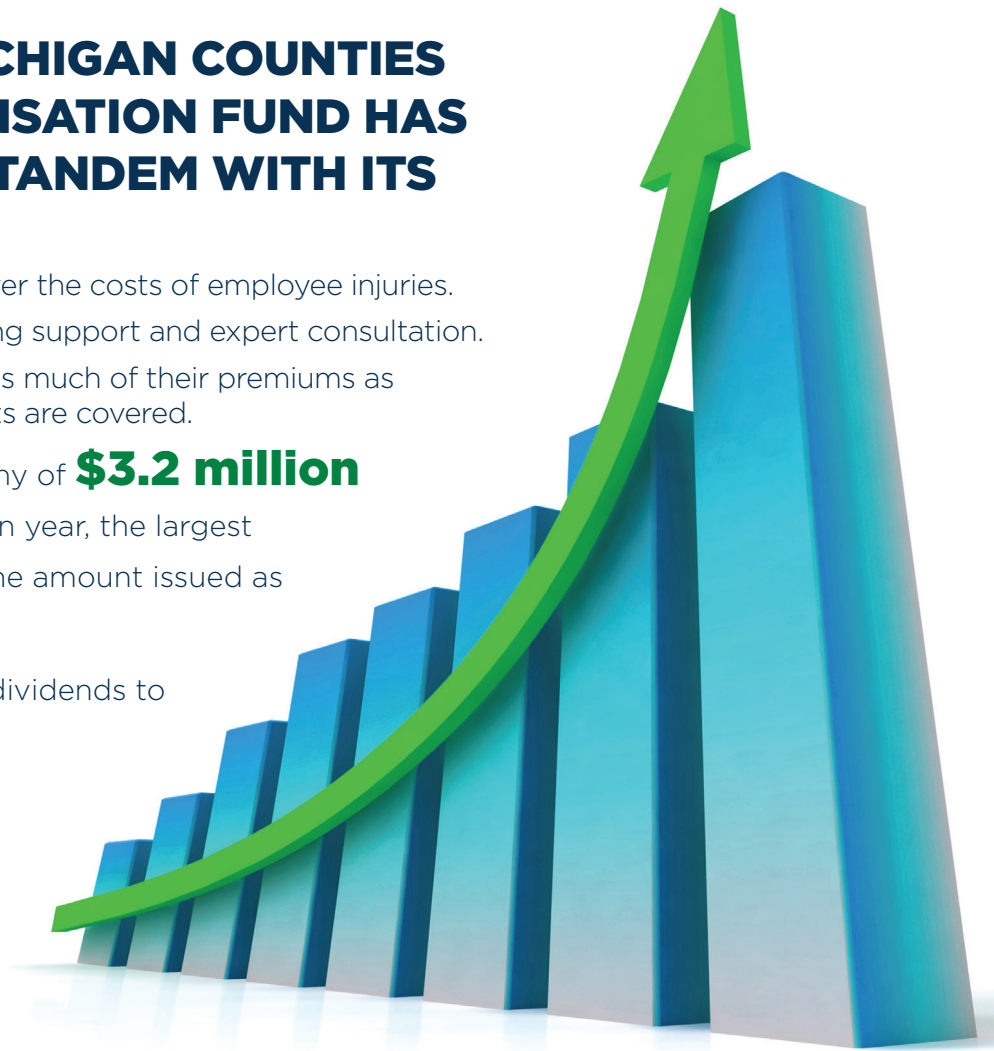
DECADES OF SERVICE MILLIONS IN DIVIDENDS

SINCE 1979, THE MICHIGAN COUNTIES WORKERS' COMPENSATION FUND HAS BEEN WORKING IN TANDEM WITH ITS MEMBERS TO:

1. Ensure proper premiums to cover the costs of employee injuries.
2. Minimize such injuries via training support and expert consultation.
3. Return to members each year as much of their premiums as possible via surpluses after costs are covered.

In late 2017, the fund issued just shy of **\$3.2 million** in such dividends for the 2016 plan year, the largest return in its history — and triple the amount issued as recently as 2000.

This sum pushes the fund's total dividends to nearly **\$63 million.**



**CONTACT US TODAY TO LEARN HOW WE CAN HELP YOU
PROTECT YOUR WORKERS AND YOUR INSURANCE DOLLARS:**

Timothy K. McGuire
MCWCF Administrator
tmmac24@gmail.com



800-258-1152

WWW.MICHIGANCOUNTIESWCF.ORG



Stephan W. Currie
MAC Executive Director
scurrie@micounties.org

2016 PLAN YEAR DIVIDEND

\$3,200,000

COUNTY/ ENTITY	2016 DIVIDEND
Alger County	\$15,432
Antrim County	\$78,332
Alpena County	\$6,324
Arenac County	\$22,172
Barry County	\$9,053
Battle Creek Housing Commission	\$754
Bayanet	\$185
Benzie County	\$49,927
Benzie Transportation Authority	\$10,579
Blue Water Area Transit	\$9,761
Branch County	\$78,571
Branch County District Library	\$1,361
Branch County Medical Care Facility	\$129,699
Central U.P. Planning & Development	\$323
Charlevoix-Cheboygan-Emmet Office of Emergency Management	\$168
Cheboygan County	\$62,284
Cheboygan County Building Authority	\$280
Chippewa County	\$54,350
Clinton County	\$96,839
Crawford County	\$44,259
Crystal Manor	\$1,150
Delta Area Transit	\$1,480
Delta County	\$55,493
Delta/Menominee Health Department	\$3,247
Dickinson County	\$41,345
District Health Department #10	\$10,703
Emmet County	\$82,896
Gladwin County	\$48,995
Gogebic County	\$33,660

COUNTY/ ENTITY	2016 DIVIDEND
Gogebic County Community Mental Health	\$25,369
Gogebic County Medical Care Facility	\$114,695
Gogebic County Transit	\$2,139
Gratiot County	\$55,881
Huron Clinton Metroparks	\$36,763
Interurban Transit Authority	\$841
Ionia County	\$98,838
Iron County Medical Care Facility	\$4,380
Isabella County	\$111,720
Isabella County Medical Care Facility	\$101,679
Isabella County Transportation	\$8,112
Kalkaska County	\$13,840
Kalkaska Public Transportation Authority	\$2,329
Keweenaw County	\$14,993
Keweenaw Mountain Lodge	\$935
Lake County/ Lake County Clerk	\$83,756
LifeWays, Inc.	\$2,756
Livingston County	\$353,051
Livingston County Community Mental Health	\$17,943
Luce County	\$6,521
Luce Ambulance Service	\$3,654
Mackinac County	\$19,600
Manistee County	\$38,396
Manistee County Medical Care Facility	\$71,665
Martha T. Berry Medical Care Facility	\$17,435
Mason/Oceana Counties Enhanced 911	\$1,570
Mecosta County	\$99,632
Menominee County	\$55,495
Monroe Housing Commission	\$540

COUNTY/ ENTITY	2016 DIVIDEND
Montmorency County	\$2,244
Newaygo County	\$78,824
Newaygo County Medical Care Facility	\$116,118
Oceana County	\$65,105
Ontonagon County	\$19,770
Osceola County	\$99,835
Oscoda County	\$8,119
Otsego County	\$47,855
Otsego County Judicial System	\$3,322
Presque Isle County	\$6,704
Roscommon County	\$64,755
Roscommon County Transportation Authority	\$17,517
Sanilac County	\$56,595
Sanilac County Medical Care Facility	\$80,234
Sanilac County Community Mental Health	\$46,946
Sanilac County Transportation	\$6,069
Schoolcraft County	\$24,627
Schoolcraft County Medical Care Facility	\$55,070
St. Clair County Community Mental Health	\$8,943
Straits Area Narcotics Enforcement	\$98
Tuscola County	\$14,688
University Center-Gaylord	\$453
Village of Edwardsburg	\$799
Village of Marcellus	\$1,293
Wayland Area EMS	\$3,390
Wexford County	\$55,477
TOTAL PAID	\$3.2 MILLION